



62 Barley Road, Andover, SP11 6GB
Asking Price £495,000



62 Barley Road, Andover,
Asking Price £495,000

PROPERTY DESCRIPTION BY Mr Nick King

This exclusive four bedroom barn styled family home, is located in a private courtyard within a modern development on the outskirts of Andover. The accommodation in brief comprises: entrance hall with vaulted ceiling, living room, open plan kitchen diner and guest w/c. Upstairs there are four bedrooms with en-suite facilities to the master bedroom and a further family bathroom. Externally you have an enclosed south facing garden predominantly laid to lawn, with a patio and a powered summer house. There is parking for three vehicles, two of which are located behind a secure car port.



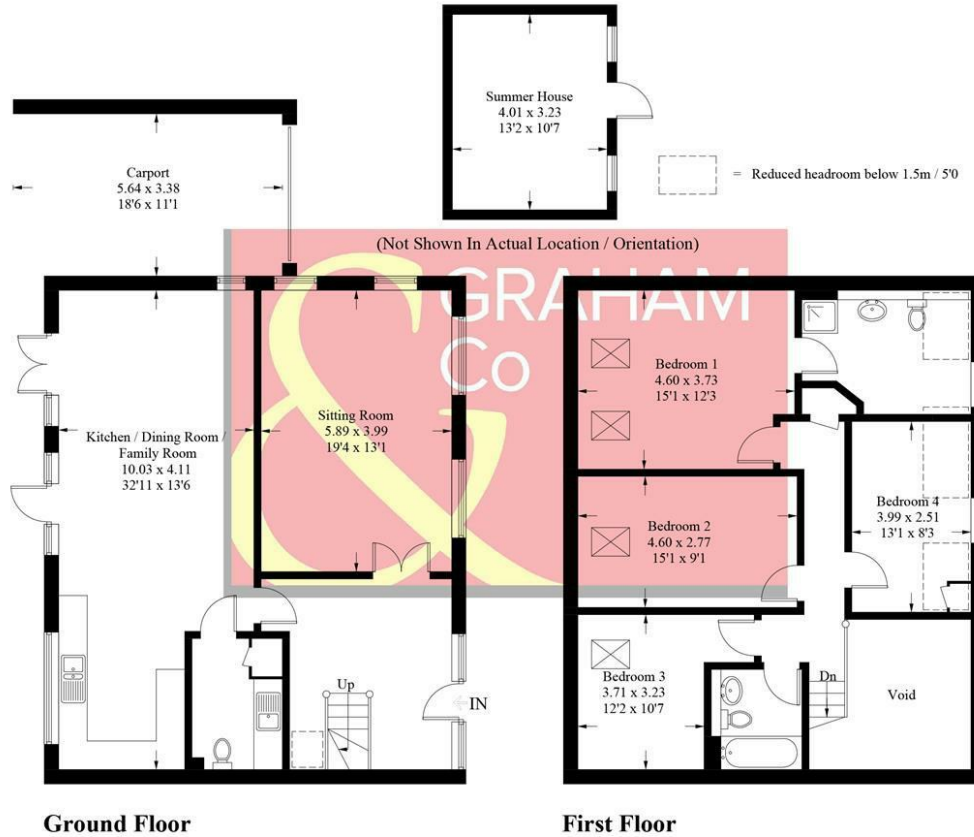


Augusta Pk Profile
 Augusta Park has history woven into its fabric with old flint farm walls from East Anton's time as farmland forming part of a major regeneration programme to this already well-established and bustling Hampshire town. This is an area with its own rich history. Andover is the location of a major crossing point of two important Roman roads: the Portway from Winchester to Marlborough, and the Icknield Way, which runs past Augusta Park on its way between Salisbury and Silchester. The actual site of the crossroads is very close to the development, but excavations in 1970, while revealing many Roman remains, failed to find the exact location. Now the area is a growing and welcoming community with a community centre, sports pavilion and the Endeavour Primary School already open, together with planned shops and village 'local area'. You will feel you belong from the start in a home tailored to modern living set amongst acres of beautifully landscaped open spaces, parks and play areas. Not wanting to travel too far for groceries? Then the brand new Co-op opened in April 2018 is on the doorstep located in East Anton Farm Road, along with the recently opened pizza takeaway for those not wanting to cook. Please note that as with most modern housing developments, this property may have a minimal yearly "estate charge". Please ask for further information.



Barley Road, SP11

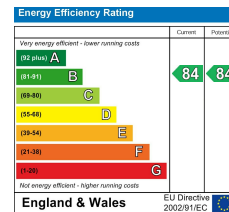
Approximate Gross Internal Area = 156.8 sq m / 1688 sq ft (Excluding Void / Carport)
 Summer House = 13.3 sq m / 143 sq ft
 Total = 170.1 sq m / 1831 sq ft



Whilst every attempt has been made to ensure the accuracy of the floorplan, measurements of doors, windows and rooms are approximate. These plans are for representation purposes only as defined by RICS Code of Measuring Practice and used as such by any prospective purchaser. © Emzo Marketing (ID741137)

DIRECTIONS

From our office in London Street proceed to the roundabout and take the first exit into Eastern Avenue. At the Swan Court roundabout take the second exit into New Street. Continue along to the mini roundabout and take the second exit. At the major roundabout take the second exit into Newbury Road, passing the traffic lights and under Enham Arch. At the next roundabout take the second exit right into Smannell Road. Take the second left into Icknield Way, and at the roundabout take the third exit into Augusta Way West. Take the first left into Barley Road. Continue past the original farm house and in to



Tax Band: E



OPEN 7 DAYS

If you are considering selling your home
 please contact us today for your free
 no obligation valuation

01264 356500

IMPORTANT: we would like to inform prospective purchasers that these sales particulars have been prepared as a general guide only. A detailed survey has not been carried out, nor the services, appliances and fittings tested. Room sizes should not be relied upon for furnishing purposes and are approximate. If floor plans are included, they are for guidance only and illustration purposes only and may not be to scale. If there are any important matters likely to affect your decision to buy, please contact us before viewing the property.